

neo NAVIGuide

2017.09 E Ver.04



Find Neobiotech online

PERFECT IMPLANT PLANNING
FOR BRIGHT SMILE



Contents

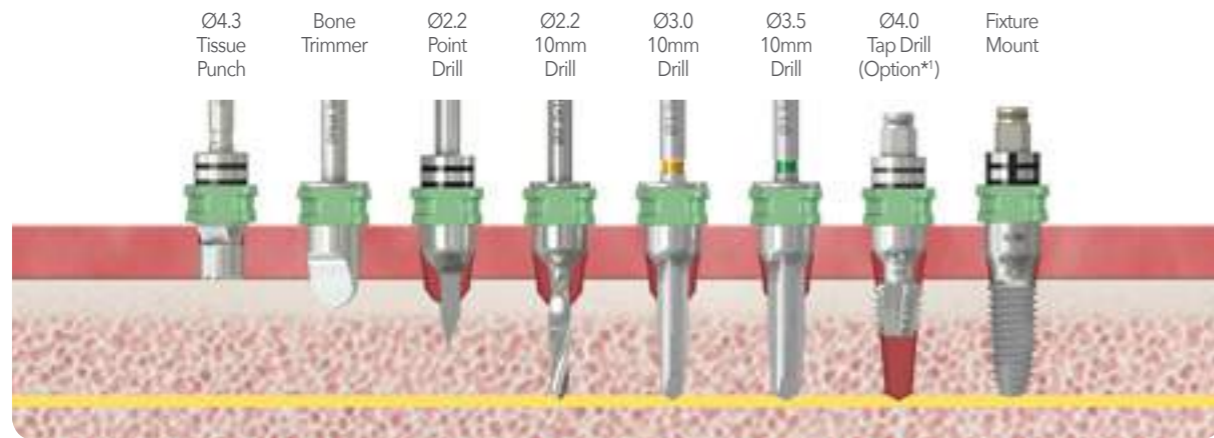
Neo NaviGuide Kit	P 04
Neo NaviGuide Drilling Sequence	P 06
Why Neo NaviGuide?	P 07
Features of Neo NaviGuide	P 08
Neo NaviGuide Clinical Case	P 10
Neo NaviGuide Process	P 12
Neo NaviGuide Kit Components	P 14
Anytime Loading	P 17



Neo NaviGuide Kit

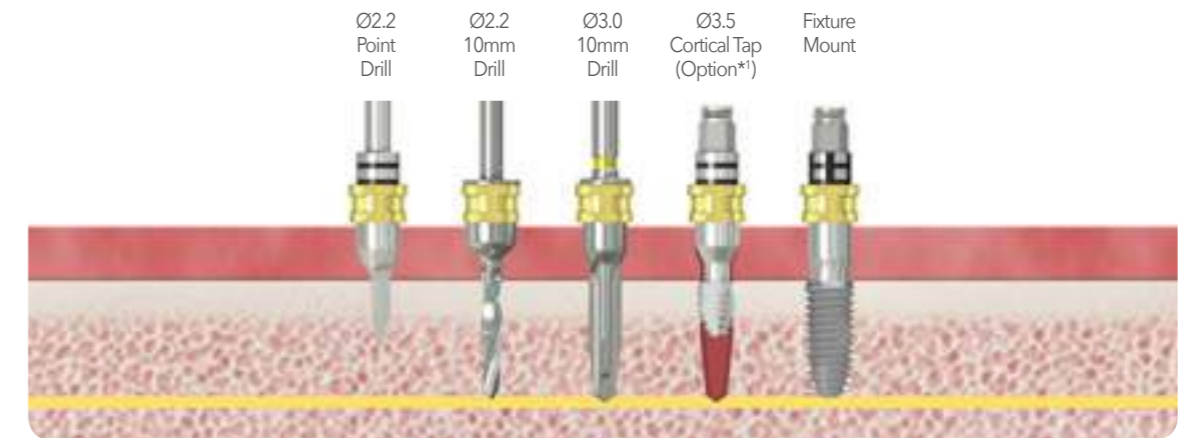
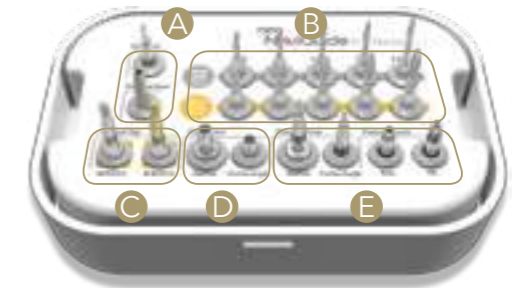
Neo NaviGuide Kit R/W ver.0

	Ø3.5	Ø4.0	Ø4.5	Ø5.0
7.3mm		✓	✓	✓
8.5mm		✓	✓	✓
10mm		✓	✓	✓
11.5mm		✓	✓	✓
13mm		✓	✓	✓



Neo NaviGuide Kit Narrow ver.0

	Ø3.5	Ø4.0	Ø4.5	Ø5.0
7.3mm				
8.5mm	✓			
10mm	✓			
11.5mm	✓			
13mm	✓			



Neo NaviGuide **Drilling Sequence**

Step 1
Fix the surgical guide inside the oral cavity using vertical anchoring tools.



Step 2
Remove the soft tissue using tissue punch. Trim the crestal bone using bone trimmer.



Step 3
Precise drilling on the implant site using initial drills.



Step 4
Secure the implant placement space with stop drill, countersink drill, or profile tap.



Step 5
Place implants using fixture mount.



Why Neo NaviGuide ?

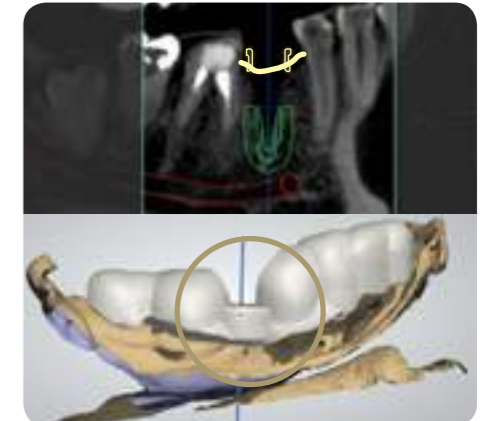
<p>1</p> <p>Predictable surgery</p>	<p>2</p> <p>Simulation of treatment plan</p>	<p>3</p> <p>Saving Surgery Time</p>
<p>1 More predictable implant placement can be done as the implantologist's treatment plan becomes a clinical reality with Neo NaviGuide.</p> <p>2 With the visualization of implant planning, the patients will get a good impression during the consultation by explaining the treatment plan in a clear and visual way.</p> <p>3 Save valuable time and increase treatment efficiency by using the customized surgical template. In addition to this, the patients will be more satisfied with less clinic visit.</p> <p>4 Due to minimal flap opening, the patient will bleed less, and the risk of infection will be lowered.</p> <p>5 The success rate of the surgery will be raised as it became possible to find the optimal balance between the implants and the prostheses as the surgery is planned based on the final restoration.</p> <p>6 Temporary restorations provided to the patient on the surgery day reduces the stress caused by the treatment, and allows to return to the daily life immediately.</p> <p>7 Patient who has experienced safe and pain-less digitized implant surgery will make a positive decision when he needs to decide for another implant surgery.</p>	<p>4</p> <p>Minimally Invasive Surgery</p>	<p>5</p> <p>Prosthetic-driven digital workflow</p>
<p>7</p> <p>Positive implant experience for patients</p>	<p>6</p> <p>The complete restoration package</p>	

Features of Neo NaviGuide

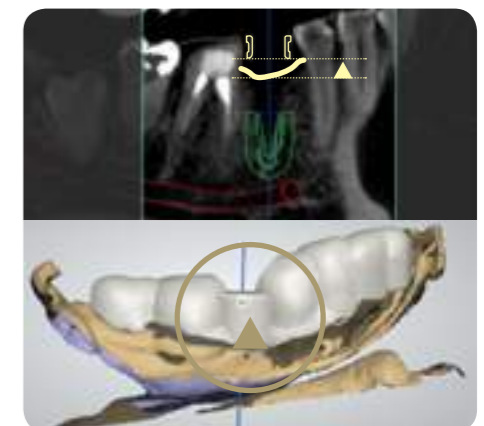


Offset Design

Teeth interference or gingival height related problems can be solved by increasing the height of the sleeve up to 3mm.
9mm, 10.5mm, 12mm Offset



Sleeve Offset : 9mm



Sleeve Offset : 12mm

Neo NaviGuide Clinical Case

Challenges of a Beginner Implantologist

Case Information : ST Dental Clinic, 60s Male.

A general dentist has placed implants to one of his family member using Neo NaviGuide. 8 implants were placed easily and safely using Neo NaviGuide. Implants were placed ideally as planned with the help of a consulting dentist.



Implant Planning



Placing the surgical guide in the mouth



Placing the implant



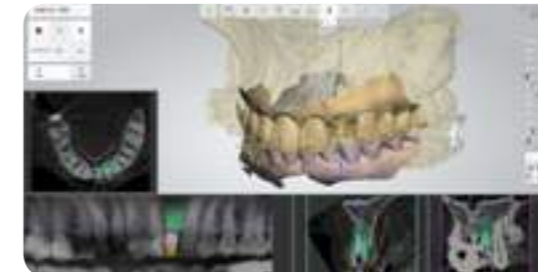
Immediate loading applied to the immediately placed implant after extraction on the anterior site

Case Information : H Dental Clinic, 30s Female.

Considering the esthetical factors of left lateral incisor, a temporary prosthesis was delivered after immediate implant placement followed by extraction. Surgery was done without interference from the teeth by adjusting the height of the guide sleeve (offset). The patient's satisfaction was high as she returned to daily life immediately after the implant surgery.



Implant Planning



Guided Drilling & Placing the implant



Provisional crown




Neo NaviGuide Process


Digital workflow based on Neo NaviGuide solution allows fast and convenient communication, and lessens the burden of implantologist with reasonable expense.





Neo NaviGuide Kit Components


Neo NaviGuide Kit R/W ver.0


Tissue punch	Size	Product name
	4.3 / Regular	NGTP43


Bone Trimmer	Size	Product name
	OffSet 0	NGBT00
	OffSet 1.5	NGBT15
	OffSet 3	NGBT30

Point Drill	Size	Product name
	Ø2.2	NGPD22

Vertical Anchor	Type	Product name
	in Bone	SGVABRW
	in Fixture	SGISVAFRW


2.2 Initial Taper Drill	Size	Product name
		NGTWD2207
		NGTWD2208
	Ø2.2	NGTWD2210
		NGTWD2211
		NGTWD2213

Taper Drill	Size	Product name
		NGTD3007
		NGTD3008
	Ø3.0	NGTD3010
		NGTD3011
		NGTD3013

Taper Drill	Size	Product name
		NGTD3507
		NGTD3508
	Ø3.5	NGTD3510
		NGTD3511
	NGTD3513	

Taper Drill	Size	Product name
		NGTD4007
		NGTD4008
	Ø4.0	NGTD4010
		NGTD4011
	NGTD4013	


Taper Drill	Size	Product name
		NGTD4507
		NGTD4508
	Ø4.5	NGTD4510
		NGTD4511
		NGTD4513

Cortical Tap	Size	Product name
	F4.0 (W)	SGISFPT40R
	F4.5 (W)	SGISFPT45R
	F5.0 (W)	SGISFPT50W

Cortical Drill	Size	Product name
	Ø4.0	NGCD40F
	Ø4.5	NGCD45F
	Ø5.0	NGCD50F


Fixture Mount	Type	Product name
	Regular/Wide	SGISFARW
	Regular/Wide	SGISFARW30

Fixture Driver	Type	Product name
	Ratchet	NGISFDR
	Contra Angle	NGISFDCA

Connector	Type	Product name
	Contra Angle	SGCAC00
	Short (15mm)	SGRC10

Torque Ratchet	Product name
	TW60





1.2 Hex driver	Product name
	HD1207S

Mount Remover	Product name
	SGFART20

Drill Extension	Product name
	DE01

Neo NaviGuide Kit Components

Neo NaviGuide Kit Narrow ver.0

Point Drill	Size	Product name
	Ø2.2	NGPD22N
2.2 Initial Taper Drill	Size	Product name
	Ø2.2	NGTD2208N NGTD2210N NGTD2211N NGTD2213N NGTD2214N
Taper Drill	Size	Product name
	Ø3.0	NGTD3008N NGTD3010N NGTD3011N NGTD3013N NGTD3014N
Cortical Tap	Type	Product name
	F3.5 (N)	NGISCT35N NGISCT35NS

Fixture Mount	Type	Product name
	Narrow	SGISFAN
		SGISFAN30
Fixture Driver	Type	Product name
	Ratchet	NGISFDRN
	Contra Angle	NGISFDCAN

Anytime Loading

Neo NaviGuide System is a digitized implant treatment solution that assists implantologists to place implants based on restorative needs and surgical requirements.



Neo NaviGuide Planning Software (3shape Implant Studio)

- Optimal implant positioning planning with the 3D software.
- High esthetic and functions will be provided to the patients with the prosthetic-driven treatment planning.



3D Printed Surgical Guide

3D printed surgical guide will be placed precisely on the designated site (teeth & soft tissue), and the titanium sleeve attached inside the guide hole will allow the operator to conduct guided drilling to minimize the drilling error.



Ideal Fixation Concept

CMI Fixation concept which is the main concept of CMI implant placement, provides the best satisfaction to the implantologists who use our digital based implant guide system. The operator may choose immediate loading or use other loading options depending on the clinical indication.



Neo NaviGuide kit

Neo NaviGuide kit is composed of precise, simple, and intuitive protocols, therefore is optimized to conduct efficient implant surgery for the users.

Neo NaviGuide provides the optimized solutions for the digital implant dentistry.

History of Neobiotech

- Mar. 2017 Ridge Wider Kit
- Feb. 2017 T-brush
- Sep. 2016 IS-III active
- Jul. 2016 EZ GBR System
- May 2015 Encoded Healing abutment
- Apr. 2015 CAMeleon cs
- May 2014 World Class 300
- Dec. 2013 Manufactured CAMeleon
- Nov. 2013 EB-II active
- Oct. 2013 SinusAll Kit
PickCap Impression Kit
- Jun. 2013 IT-II active
- Oct. 2012 Prosthetic Kit / Accessory Kit
- Jun. 2012 Neoguide system
- Mar. 2012 GBR Kit
- Oct. 2011 IS-II active, Quicktight
- Jun. 2011 IS-II, S-mini & ACM
- Oct. 2010 CTi - mem
- Feb. 2010 SR Kit
- Jun. 2009 FR Kit
- Mar. 2009 Wide Implant
- Nov. 2008 CMI IS implant
- Jul. 2008 SLA-Kit
- Mar. 2008 SCA-Kit
- Mar. 2008 Obtain the patent of CMI Implant
- Sep. 2007 Merged with "Osscare.Co.Ltd"
- Jun. 2007 CMI implant(External Type)
- Feb. 2007 Change of Management
- Jul. 2000 Foundation of "Neobiotech.Co,Ltd,,"



www.neobiotech.co.kr

Neobiotech Co., Ltd. E-space #1001, 36, Digital-ro 27-gil,
Guro-gu, Seoul, Korea, 08381
Tel. +82-2-582-2885 Fax. +82-2-582-2883